



# ORTHO**SYS**®

Premium Orthopedic Software

Strengthening the Orthopedics Backbone

# Strengthening the Orthopedics Backbone

## The Digital Health Care Solutions

When we put together our line of office products and system, we had one thing in mind: **Giving you more choices to meet your needs.** And with the most innovative and complete spectrum of software solutions in the industry.

We create better. A perfect example: **OrthoSys®**. It's just not a data collection tool. Advanced IMAGING capacity place **OrthoSys®** in new generation category of solutions.

When it comes to developing Digital Healthcare Solutions. **OrthoSys®** offers unrivaled reliability; flexible design which featured to meet your exact needs, user friendly customization and ease of use.

## Fast and Efficient

One Single consistent main screen with 'WYSIWUG', with default value settings for various examinations and investigations to save valuable time and avoid mundane data inputs.

## Patient-Centric Efficient Information Management

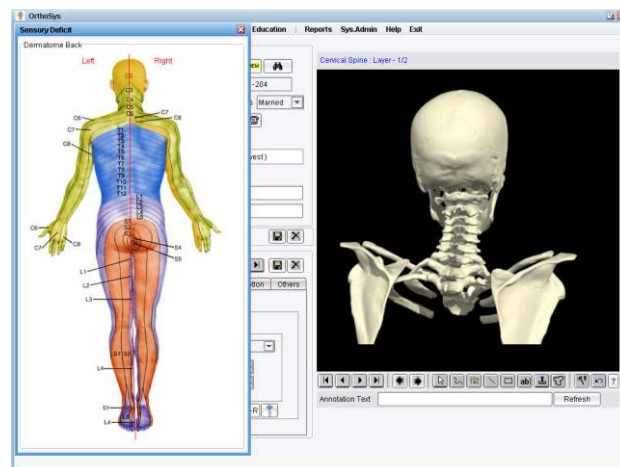
Patient-Centric architecture allows patient information to be managed directly by the **OrthoSys®** System. A complete diagnostic assessment can be completed in approximately half the time of conventional examinations. Completed examinations, diagnostics and any previous DICOM images are easily accessible to the orthopedic surgeon, in the examination room, the clinic or at home.

## No more aggravations of using Films

The **OrthoSys®** System enables orthopedists to view images, make advanced orthopedic measurements and plan surgeries quickly and efficiently without the aggravations of using film. **OrthoSys®** supports DICOM-3 Standard.

## Composite Imaging Technology

Composite Imaging technology enables orthopedists and clinicians to perform accurate digital image processing, eliminating manual viewing and reducing opportunities for human error. It Supports annotation on 3D images.



## Efficient Workflow

**OrthoSys®** provides high productivity which is essential today in medical field, Automates most repetitive task like Clinical Letters, Medical Certificates, Patient Instructions, Prescription, Patient Bills and Medical Reports.

## Flexible by Design

**OrthoSys®** is not based on hard coded artifacts. All the features, radiological values; default settings and ranges can be dynamically customized with new values on the fly. Allows you to expand your present and future needs in a flexible manner.



# Strengthening the Orthopedics Backbone

## Analytical Reports

A complete wizard to provide diverse constraints based on all available recorded information, generate a query on the fly and produce report, for use in statistical and R&D domains.

Clinical Reports produced in plain English paragraphs wise, depicting all recorded examinations investigations, diagnostics and treatment.

## Risk Management

Minimizes the risk of documentation audits.

Eliminates illegible medical records.

Database backups for protection from natural disaster or theft.

## Return on Investment

- Immediate Payback
- Eliminate transcription costs

## Security

Login allowed for only known Profiles, with Roles and Privileges. Audit Trail allows to keep track of who entered or altered information in the system.

## DataBase Independent

Works unperturbed with most Relational Databases like Oracle, MySQL, MS SQL including MS-Access.

## Platform Independent

Based on Java Technology works unperturbed on virtually all Operating Systems.

## Future Enhancements

- Certification for HIPAA regulations
- HL7 support
- Speech Recognition
- Hand Help Device Support
- Tablet Support

The screenshot shows the 'Analytical Tool' window. It has a 'Patient Profile' section on the left with fields like Mobile, Fax, Email, Address, RefBy, RefCategory, RefByTime, Allergy, Overlap, MajorDisease, MajorOperation, and BirthDate. The main area is divided into 'Available Fields', 'Selected Fields', 'Operation', and 'Constraints'. The 'Available Fields' section is expanded for 'Orthopedics - Knee Joint', showing 'Available History Fields' (Injury, LockingSince, CondylarSurface) and 'Available Exam Fields' (Dist\_VagionBread, Rom\_ActiveFrom, Rom\_ActiveTo, Rom\_PassiveFrom, Rom\_PassiveTo, Rom\_Vibrom, Eth\_Present, Eth\_Supra). The 'Selected Fields' section shows 'Eth\_Present', 'Eth\_Supra', and 'Rom\_Vibrom'. The 'Operation' section shows a table with 'Field', 'OP', and 'Value' columns, with 'Rom\_Vibrom' selected and 'Present' entered in the 'Value' column. The 'Constraints' section shows a query: 'EthDate > 25-10-2004 AND EthDate < 25-10-2005 AND Injury = Twisting AND Eth\_Present = PRESENT AND Knee\_Blood\_Investigation = Done'. There are 'Accept', 'Cancel', and 'Close' buttons.

The screenshot shows the 'DICOM' viewer window. It has a menu bar with 'MyAssistant', 'Letters', 'Certificates', 'Analytical Tools', 'Patient Education', 'Reports', 'SysAdmin', and 'Help'. The 'Patient Details' section on the left shows fields for Name (Phoenix CO Trip), Patient ID (190283), Sex (O), Birth Date (11-11-1958), Study Date (21-02-2002), Manufacturer (SIEMENS), Institution (Unknown), Physician, Image Details (Modality: MR, No. of Frames: 1, Width: 960, Height: 960, Slice Thickness: 3), and Photometric Interpretation (MONOCHROME2). The main area displays a medical image of a knee joint. The bottom section has 'View Images', 'Save Images', 'Scan Images', and 'DICOM' buttons, along with an 'Annotation Text' field and a 'Refresh' button.



## System Requirements

The basic minimum hardware and software requirements have to be met before an attempt is made to install the **OrthoSys®** System from the binary distribution. The minimum hardware and software requirement for running **OrthoSys®** are described in this section.

## Hardware Requirements

**OrthoSys®** System operates on computers running Intel or compatible Pentium, Pentium Pro, or Pentium II processors. The processors must be running at a minimum of 500 MHz.

## Software Requirements

The following software requirements have to be met before attempting to install **OrthoSys®**.

- JDK 1.5.0 or above
- MySQL 5.0

## Operating Systems

**OrthoSys®** Software operates on any one of the following Operating Systems.

#	Platform
1	Windows Server 2003
2	Windows® 2000
3	Windows XP
4	Windows 98
5	Linux

Hardware	Minimum Requirement	Recommended Requirement
Processor	Intel® or compatible Pentium 500 MHz.	Pentium 4 or Higher
Memory	256 MB	512 MB
Hard Disk	20 GB	40 GB
Monitor	VGA 1024 by 768 Pixel	
Pointing device	Microsoft Mouse or compatible	
CD-ROM drive	24x and above	48x and above
Printer	DOT Matrix 80 column	Epson

Contact
<b>bbnisys Technologies (P) Limited</b>  <b>Head Office :</b> 4, Jhansi Road, Gwalior, India 474002 Phone: +91-751-2341037 Fax: +91-751-4010134  email: <a href="mailto:info@bbnisys.com/support@bbnisys.com">info@bbnisys.com/support@bbnisys.com</a>  Website: <a href="http://www.bbnisys.com">www.bbnisys.com</a>