



TraumaCare[©]

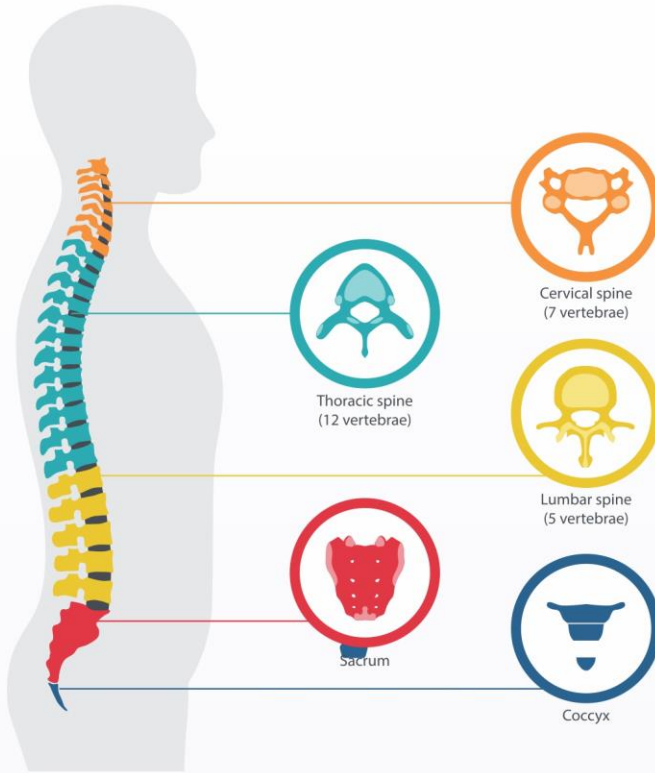
Pre Operative Planning System

bbnisys, the maker of TraumaCare, was established in 2005 by experienced team, with the goal of developing practical computer-assisted surgical tools.

Trauma Care, bbnisys's introduction in a growing product line, enables presurgical planning of trauma, arthroplasty and osteotomy procedures. bbnisys products are designed for small to medium-size practices as well as for large hospitals and academic institutions

TraumaCare is a comprehensive solution for Orthopaedic Surgeons, to meticulously prepare a Pre-Operative Plan prior to a surgery. Based on the concepts and principles of AO - Fracture Reduction Technique Manual, TraumaCare judiciously follows these steps of preparing the pre-operative plan with intrinsic ease and dexterity.

The TraumaCare facilitates the Orthopaedic Surgeon to prepare a complete layout of the fractured region, trace them with different colors, superimpose them, move, rotate and flip them, and add implants prior to a surgery. TraumaCare allows surgeons to evaluate and manipulate Digital X-ray Images, while performing various pre-operative surgical planning and evaluation of X-ray Images.



Several tools are provided to measure Anatomical details and discrepancies. These tools are designed to endow a high level of dynamic features to eradicate chances of error and mundane task of redoing work repeatedly.

The complete schematics of the pre-operative procedure can be obtained in the form of printed graphics, after a preview which allows to scale the image if necessary and set the orientation to portrait or landscape. A complete report of the implants used with their quantities, and the displacement and rotation of bones/fragments can be generated. TraumaCare can be used in conjunction with a CARM to augment the already existing features, and to circumvent the need of performing a pre-operative plan from the captured Digital X-ray Image.



Supports all the three Techniques of AO

Direct Overlay - Straight Bones Sound Side - Acute Fracture From Axis - Lower Extremity.

Tracing with Splines and FreeHand

Spline curves - Most accurate and can be edited for corrections FreeHand curves - Best suitable for small Bone fragments and fast tracing Tracings can be Flipped Horizontally and Vertically.

Dynamic Mover

To Move Traced objects and Implants

Dynamic Axis

Anatomical Axis can be placed and dragged to desired location.

Measurement Tool

Allows multiple measurement of Digital x-ray Image and Preoperative plan layout

Implants

Provides almost all types of Plates, Rings, Screws, Bolts, Rods, Nails, Wires and Stem.

Report

Comprehensive Report of all Implants used. Identical Implants are clubbed together showing their total Quantities. Details of Bones/Fragment Displacement in millimeters with proper direction, and their Angle of Rotation in Clock-wise/Anti-Clock-Wise direction.

Rotator

To Rotate Traced objects and Implants

Calibration Tool

Allows to Calibrate the Digital x-ray Image with a Calibration tool via. Spherical or Linear method.

Image Processing

The Digital x-ray Image can be Sharpened, Blurred, Inverted prior to tracing to facilitate viewing of intricate details during tracing.

Print & Preview

Facility to preview the preoperative plan and scale and orient them if necessary prior to printing

Anatomical Measurement Tool

Supports several means to dynamically measure, Angle, Length Diameter, Pelvis tool to measure percentage Hip Migration, Leg Length Discrepancy, Sacral Obliquity, Coronal/Sagittal Balance and Degree of Deformity and Plane of Location can be dynamically computed.





Hardware Requirements

TraumaCare © System operates on computers running Intel or compatible processors. The processors must be running at a minimum of 500 MHZ

Software Requirements

The following software requirements have to be met before attempting to install TraumaCare©

Application Server: JBoss
Java 2 SDK, version 1.4.0
MySQL 5.0

Operating Systems

TraumaCare © Software operates on Windows and Linux Operating Systems.

Platform

Platform Independent Windows or Linux

Business Partner Details



Contact Details

Bbnisys Technologies (P) Limited

Global Delivery and R&D Center:

4, Nath Kripa, Opp. Hotel Grace, Jhansi Road, Gwalior - 474002

Phone: +91-9893990675

email:pnair@bbnisys.com

Website: www.bbnisys.com

Registered Office :

Near DHL Courier,

Opp. Captain Roop Singh Stadium, Jhansi Road, Gwalior – Madhya Pradesh - 474002

Phone: +91-751-2341037

Fax: +91-751-4010134

email: info@bbnisys.com